



PATCHWORK SHORTS

Created by Anna Erneborg

Create one-of-a-kind patchwork fabric with ease. The design is created in the Quilt software and then sent to Crafting, where precise pieces are cut quickly and effortlessly. Once cut, the fabric can be sewn together and paired with your favourite sewing patterns to create truly unique garments that reflect your personal style. Perfect for adding a creative twist to any sewing project, this method makes custom patchwork both accessible and fun. The PDF pattern for the shorts comes in sizes Small to X-Large.

CATEGORY:

- Sewing
- Crafting (optional)

SKILL LEVEL:

- Intermediate

MACHINE:

- Sewing Machine
- Singer MOMENTO Craft Cutting Machine (optional)

TOOLS/ACCESSORIES:

- SINGER MOMENTO Fabric Grip Mat and Rotary Blade (optional)
- Iron and Ironing Board
- Safety Pin

MATERIALS:

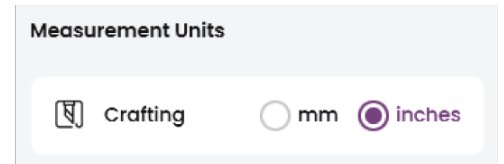
- 8 colors of cotton fabric – 1 fat quarter each
- Thin cotton fabric for lining – $\frac{3}{4}$ yard (75 cm), 55 in (140 cm) wide
- Thread
- Elastic – $1\frac{1}{2}$ in (30 mm) wide



Change Settings

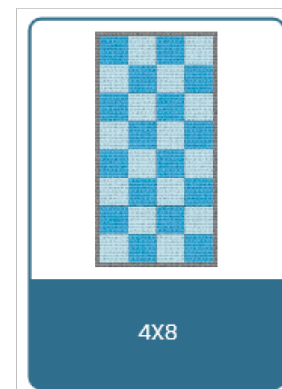
Step 1: Before you begin, make sure the Quilting Software is set to inches.

Go to CREATIVATE Home – Settings – App Settings and confirm that Units are set to Inches.



Load a Quilt Layout

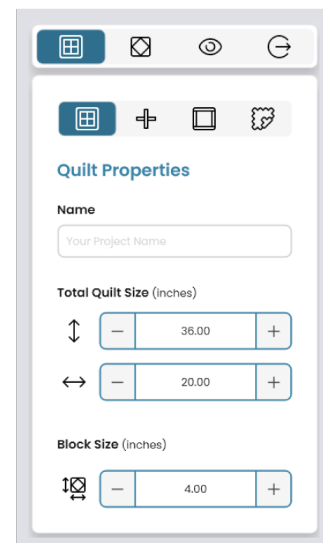
Step 2: Open CREATIVATE Quilting Software and load a preset quilt layout. Select the 4 × 8 layout.



Set Quilt Properties

Step 3: In Quilt Properties panel, set the Block Size to 4".

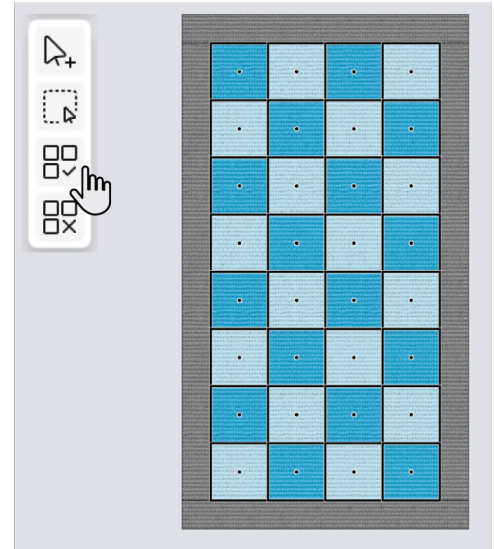
This will create a finished fabric size of 16" × 32" (no border added).





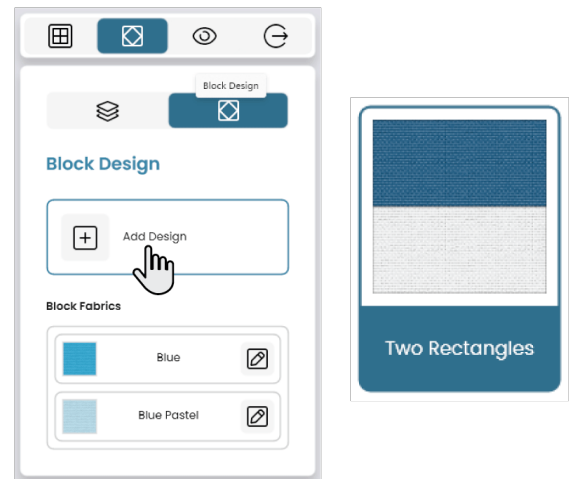
Select All Blocks

Step 4: Click the Select All button to select all quilt blocks.



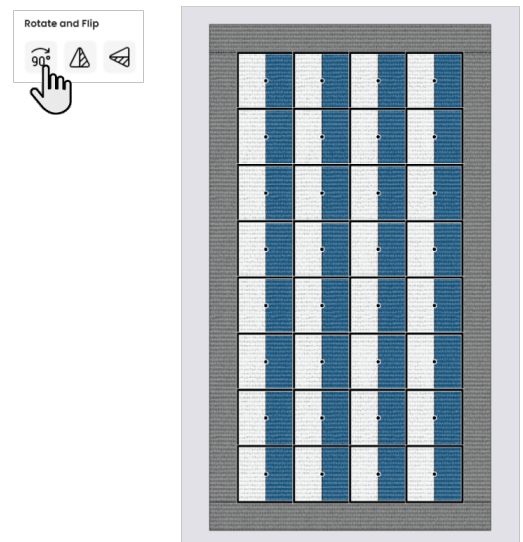
Select a Block Design

Step 5: In the Quilt Block Tab, click Add Design and select the Two Rectangles block.



Rotate the Blocks

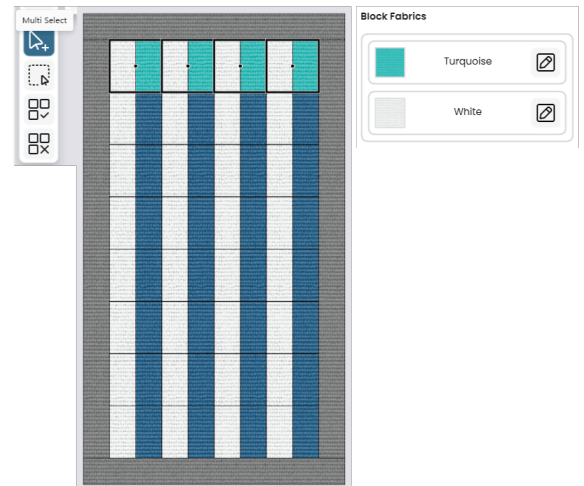
Step 6: With all blocks still selected, click the Rotate 90° button.





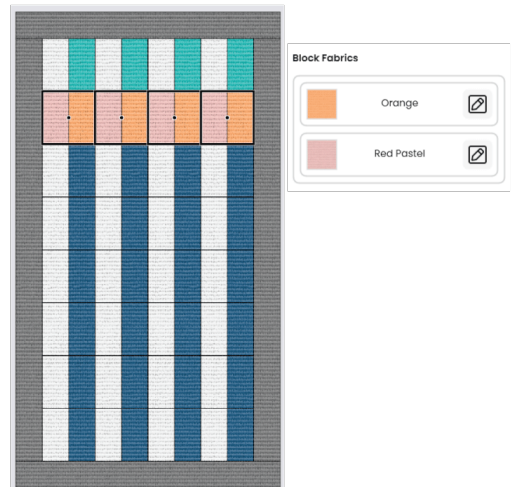
Change Colors on the First Row

Step 7: Click outside the quilt so no blocks are selected. Select the Multi Select tool, then click to select the four blocks in the top row. Change the Blue fabric to Turquoise.



Change Colors on the Second Row

Step 8: Click outside the quilt so no blocks are selected, then select the four blocks in the second row. Change the fabrics to Orange and Red Pastel.



Change Colors on the Third Row

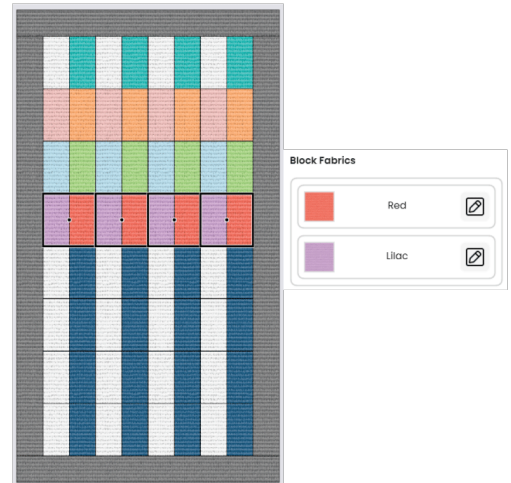
Step 9: Repeat the process for the third row, changing the fabrics to Lime Green and Pastel Blue.





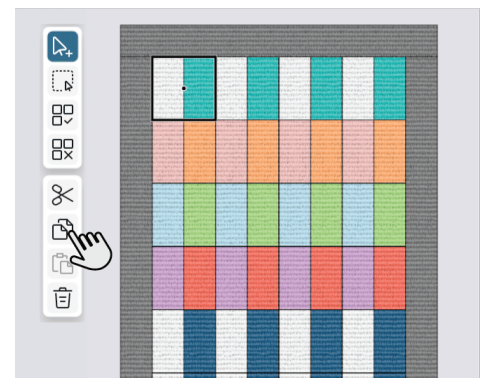
Change Colors on the Forth Row

Step 10: Repeat the process for the fourth row, changing the fabrics to Red and Lilac.



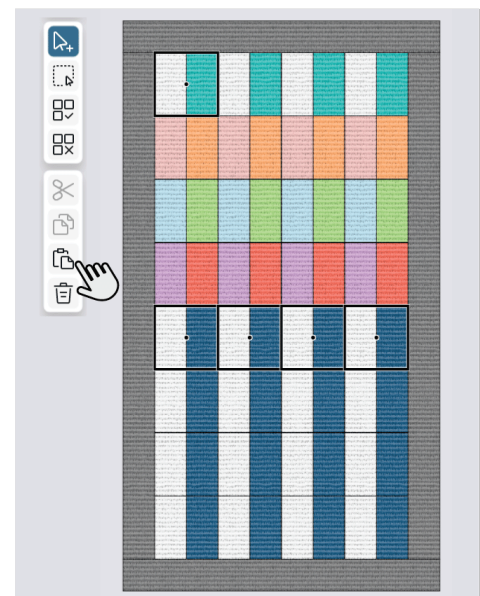
Copy a Block

Step 11: Make sure no block is selected and that the Multi Select tool is active. Click one block in the first row, then click Copy.



Paste the Block

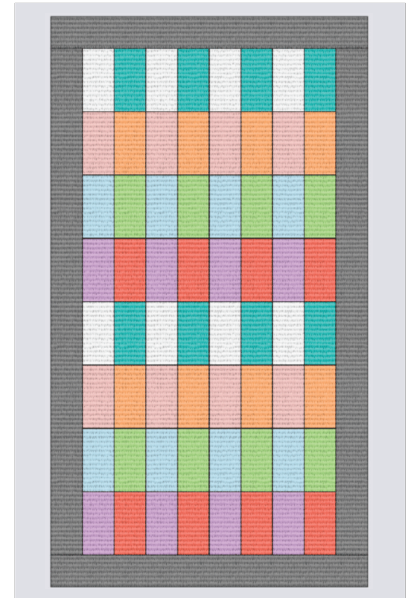
Step 12: Select the blocks in the fifth row, then click Paste.





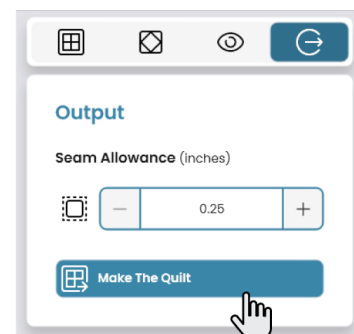
Finish the Quilt Design

Step 13: Repeat the copy-and-paste process as needed to complete the quilt layout.



Set the Seam Allowance

Step 14: In the Output tab, choose your preferred seam allowance, then click Make the Quilt.



Cut the Pieces

Step 15: Use the Yardage Tab to get measurements for manual cutting, or send your design to Crafting for cutting with your MOMENTO craft-cutting machine.

Note: You do not need to cut the border.





Sew the Patchwork Fabric

Step 16: Follow the instructions in the Quilt Project Overview to join the pieces together to make the quilt top (excluding the border). Press it flat.

At this point, the patchwork fabric is complete. You may use it to make a quilt or continue with the next steps to make shorts. You will need two patchwork quilt tops to make one pair of shorts.



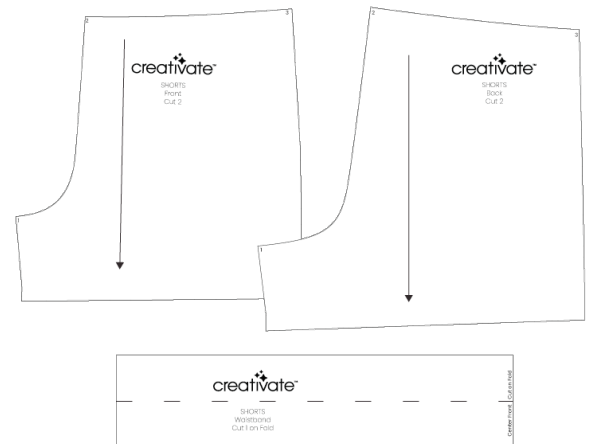
Print the Pattern

Step 17: Print the PDF pattern at 100% scale (do not shrink or fit to page).

Cut out the desired size.

The pattern includes:

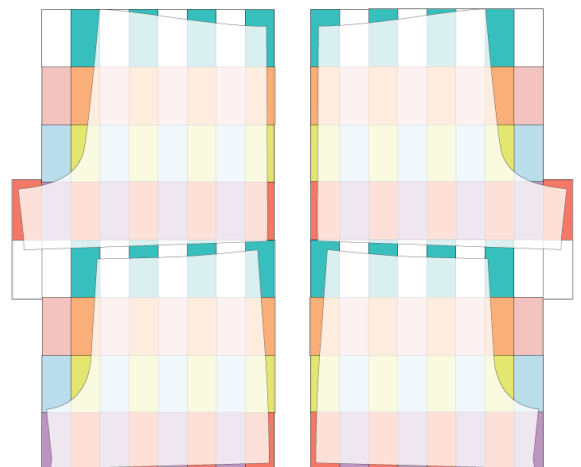
- 3/8" (1 cm) seam allowance
- 5/8" (1.5 cm) hem allowance



Check the Fabric Size

Step 18: Lay out the pattern pieces on the fabric to ensure there is enough material. For sizes L and XL, you may need to add one or two extra patches.

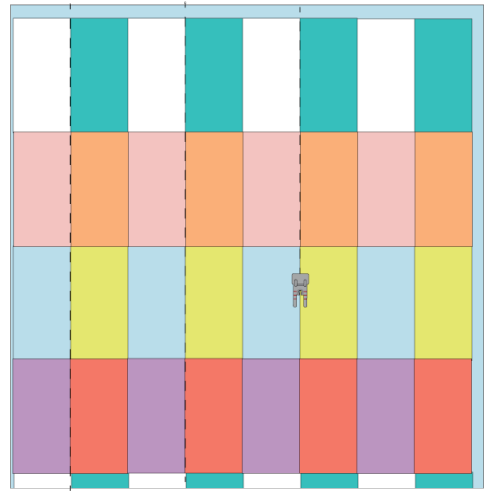
Tip: To match the square patterns on the finished garment, cut one layer at a time. Remember to mirror one of each front and back piece to create a right and left leg.





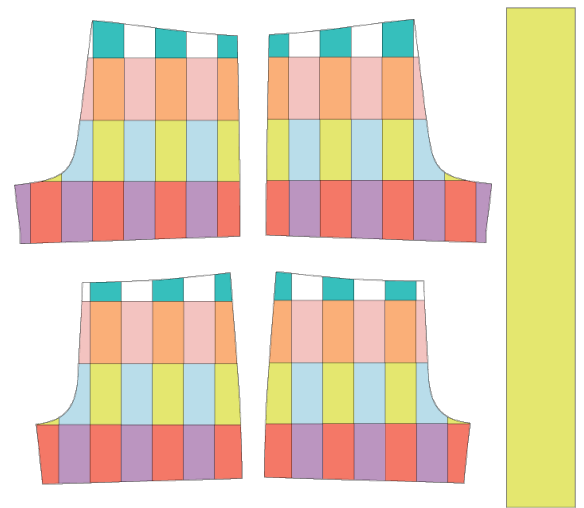
Quilt the Fabric

Step 19: Cut a piece of lining fabric the same size as the patchwork fabric. Place them wrong sides together, then stitch in the ditch along every other vertical seam to secure the layers.



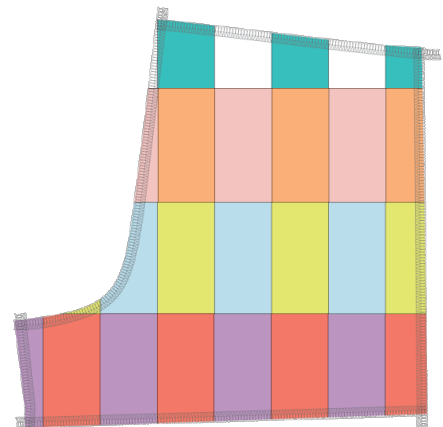
Cut the Fabric

Step 20: Lay out the pattern pieces on the quilted fabric and cut them out. Cut the waistband from a separate piece of plain fabric.



Finish the Raw Edges

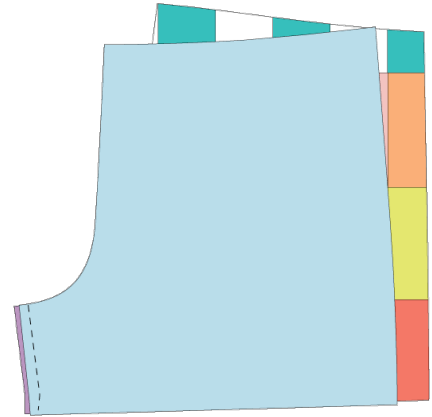
Step 21: Finish all raw edges and secure the layers together using a serger or a zigzag stitch on your sewing machine.





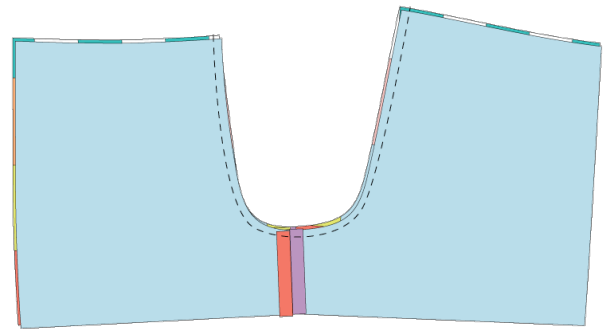
Sewing the Inseams

Step 22: Pin the Front and Back pieces together at the inner leg seam and stitch (seam #1). Backstitch all seams at both ends to secure. Press the seam open.



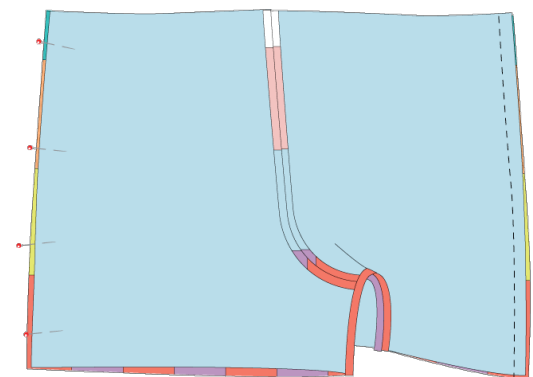
Sew the Crotch Seam

Step 23: Pin along the crotch seam and stitch (seam #2).



Sew the Side Seams

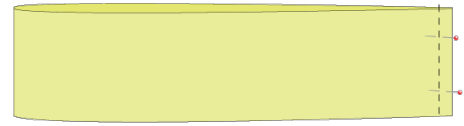
Step 24: With right sides together, pin the Front and Back leg panels at the side seams (seam #3). Stitch and press the seams open.





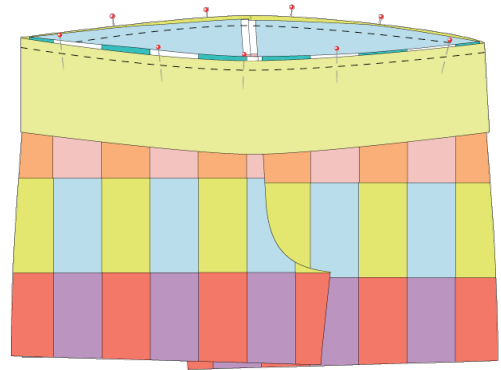
Prepare the Waistband

Step 25: Fold the waistband piece in half, right sides together and sew the short ends together.



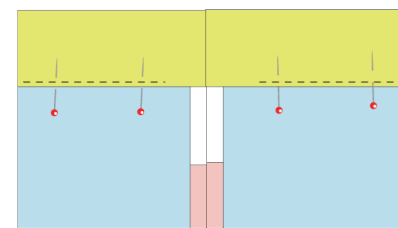
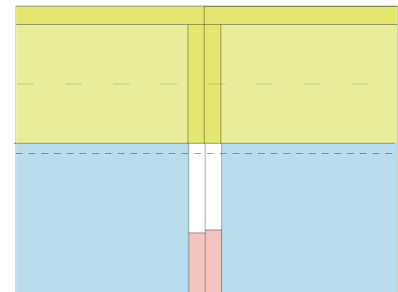
Attach the Waistband

Step 26: With right sides together, pin the waistband to the garment waist, aligning the seam with the center back. Stitch in place, then press the seam allowances toward the waistband.



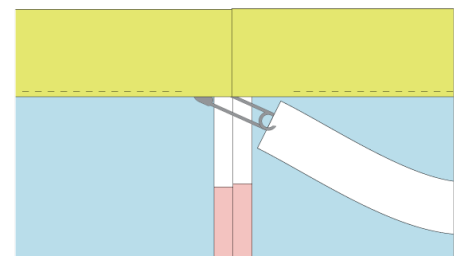
Sew the Waistband Casing

Step 27: Turn the seam allowance on the upper long edge of the waistband under by $\frac{3}{8}$ " (1 cm) and press. Fold the waistband lengthwise along the fold line and pin the pressed edge to the waist seam. Topstitch along the waistband, leaving a small opening at the back to insert the elastic.



Insert the Elastic

Step 28: Attach a safety pin to one end of the elastic and thread it through the waistband casing. Overlap the elastic ends slightly and stitch securely. Distribute the elastic evenly and sew the opening in the casing closed.





Finish the Hems

Step 29: Fold the bottom edges to the wrong side by $\frac{5}{8}$ " (1.5 cm) and pin in place. Press the hem flat and stitch to finish.

